

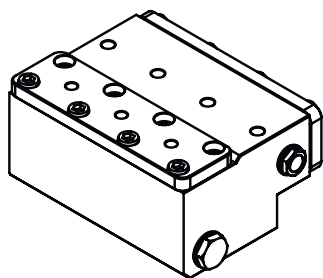


POMPE AD ALTA PRESSIONE HIGH PRESSURE PUMPS



Codice Code	Modello Model	Portata Flow Rate				Pressione Pressure		Potenza Power				Albero Shaft L:80mm - Ø40	Pistone Piston mm
		1000 Rpm		1450 Rpm		Bar	Psi	1000 Rpm		1450 Rpm			
		L/min	Gpm	L/min	Gpm			HP	Kw	HP	Kw		
P3.040.003	LMX29500R	20,00	5,28	29,00	7,66	500	7252	25,97	19,24	37,66	27,90	Destra / Right	20
P3.040.001	LMX36500R	25,00	6,60	36,00	9,50	500	7252	32,47	24,05	46,75	34,63	Destra / Right	20
P3.040.002	LMX41500R	30,00	7,92	41,00	10,82	500	7252	38,96	28,86	53,25	39,44	Destra / Right	20
P3.040.014	LMX29500L	20,00	5,28	29,00	7,66	500	7252	25,97	19,24	37,66	27,90	Sinistra / Left	20
P3.040.012	LMX36500L	25,00	6,60	36,00	9,50	500	7252	32,47	24,05	46,75	34,63	Sinistra / Left	20
P3.040.013	LMX41500L	30,00	7,92	41,00	10,82	500	7252	38,96	28,86	53,25	39,44	Sinistra / Left	20

DIAMETRO 20 / DIAMETER 20



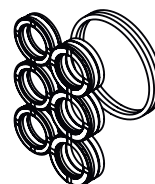
KIT - P9.040.037

TESTATA COMPLETA
COMPLETE HEAD OF THE PUMP



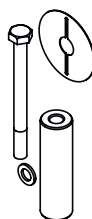
KIT - P9.039.003

ANELLI TENUTA OLIO ASTA
KIT OIL SEAL PUMP



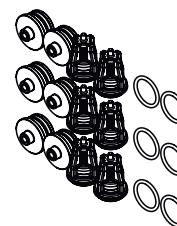
KIT - P9.003.057

GUARNIZIONE PISTONE
KIT PLUNGER SEALS



KIT - P9.004.024

PISTONE diametro 20
KIT CERAMIC PISTON DIAMETER 20



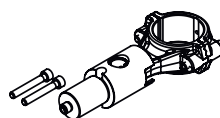
KIT - P9.001.012

VALVOLA COMPLETA
COMPLETE VALVE



KIT - P9.003.062

GUARNIZIONE PISTONE - PACCO COMPLETO
KIT COMPLETE SEALS



KIT - P9.041.009

PREMONTATO BIELLA - ASTA
PREASSEMBLED CONNECTING ROD